

Installation on Windows

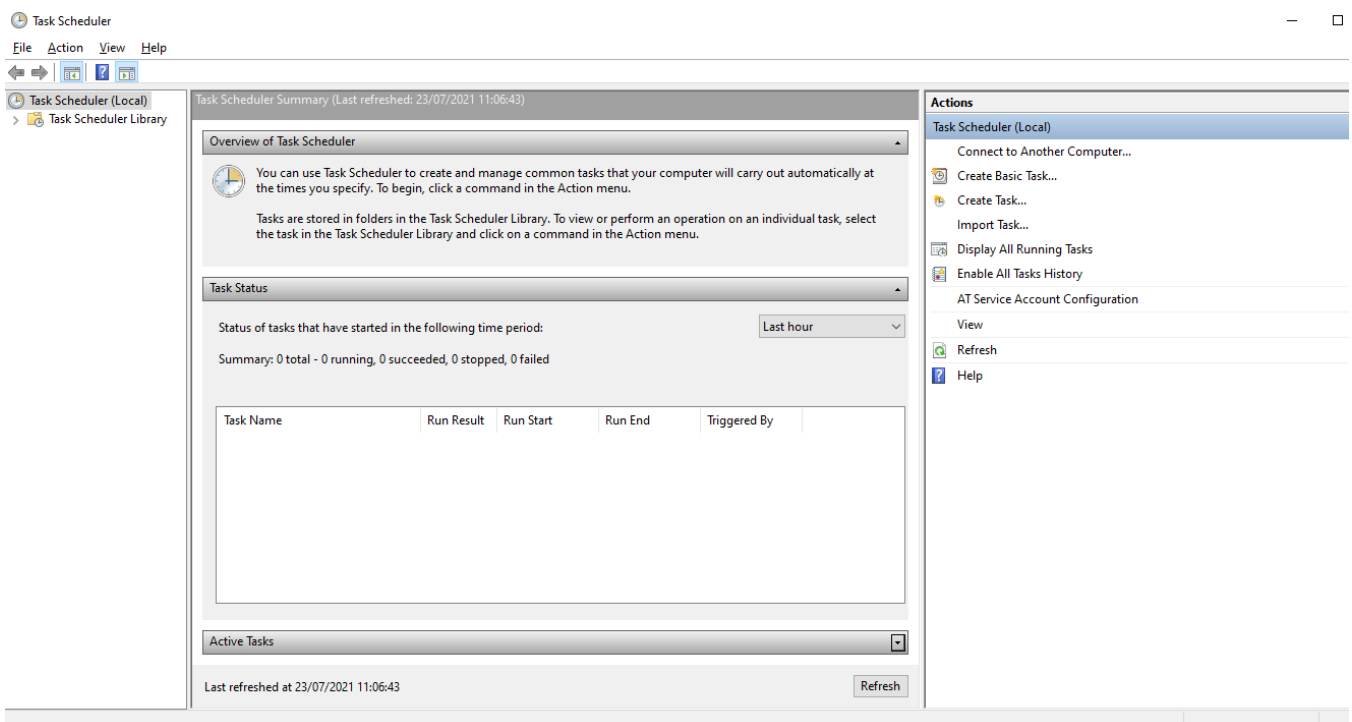
This document describes the Install Process of the nimbusec Server Agent under Windows Server 2008 and 2012. The Server Agent adds extended functionality to the nimbusec service.

Installation

1. Download the appropriate version of the Server Agent for your Server from <https://portal.nimbusec.com/einstellungen/serveragent>
2. Copy the the downloaded file to your server and extract its contents. You can choose freely where you want to keep the files. The only requirement is that the user, that will run the Server Agent can access this location and execute the binary.

Task Scheduling

1. Open the Task Scheduler



2. Select 'Create Basic Task'
3. Enter a name of the new Task



Create a Basic Task

Create a Basic Task	Use this wizard to quickly schedule a common task. For more advanced options or settings such as multiple task actions or triggers, use the Create Task command in the Actions pane.
Trigger	
Action	Name: <input type="text" value="Nimbusec ServerAgent"/>
Finish	Description: <div></div>

4. On the next two screens you can select how often the Server Agent should be run

Create Basic Task Wizard



Daily

Create a Basic Task

Trigger

Start: 26/07/2021 10:36:03 ☐ Synchronize across time zones

Daily

Recur every: 1 days

Action

Finish

< Back Next > Cancel

5. Select 'Start a Program' as Action for the Task

Create Basic Task Wizard



Action

Create a Basic Task

Trigger

Daily

Action

Finish

What action do you want the task to perform?

☒ Start a program

☐ Send an e-mail (deprecated)

☐ Display a message (deprecated)

< Back Next > Cancel

6. Click on Browse to select the Server Agent (agent.exe). In the Field 'Add arguments' add the string -config < C:\path\to\agent.conf > (replacing < C:\path\to\agent.conf > with the path to the config file)

Create Basic Task Wizard



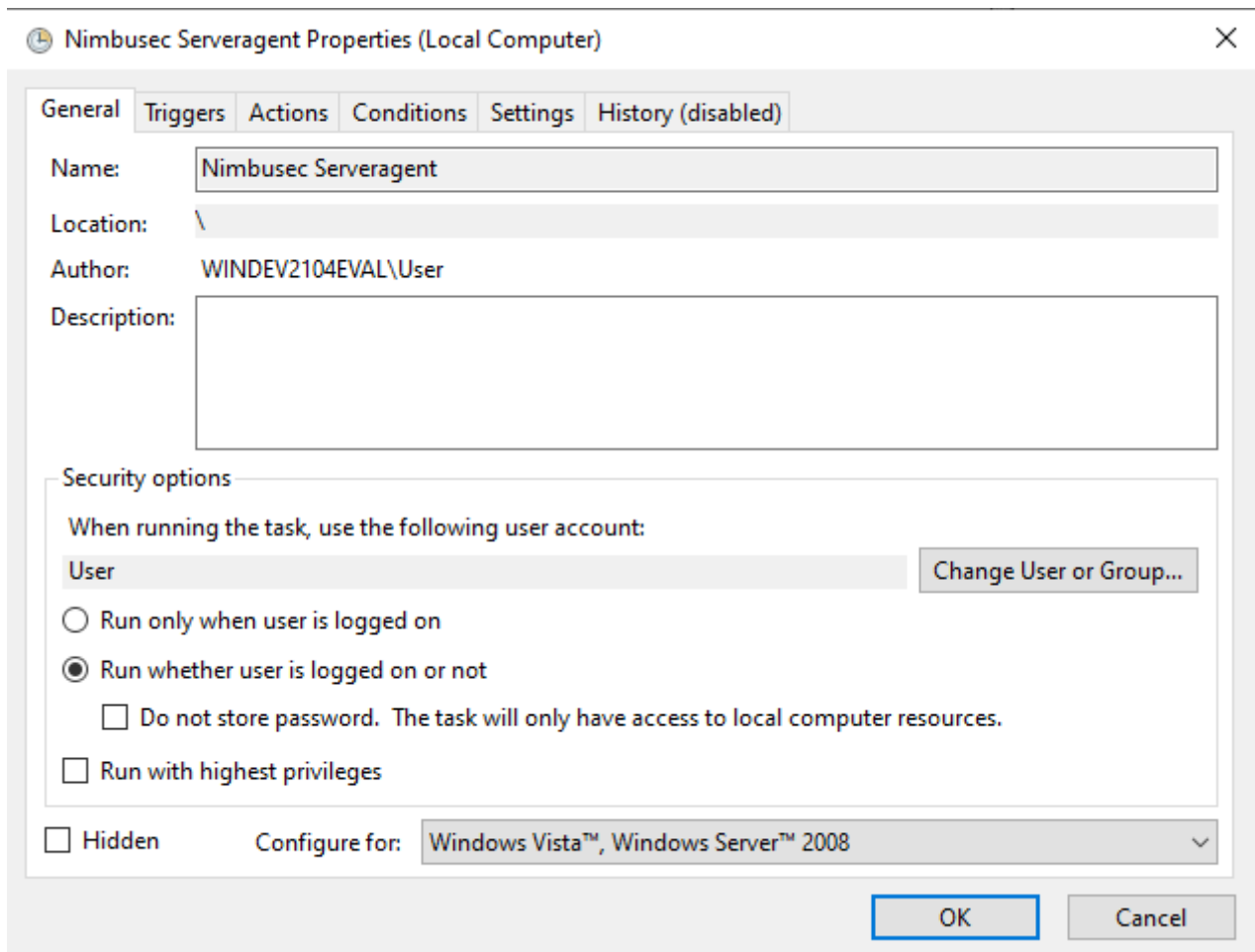
Start a Program

Create a Basic Task

Trigger	Program/script:	
Daily	C:\Users\User\Documents\agent.exe	Browse...
Action	Add arguments (optional):	--config <agent.conf>
Start a Program	Start in (optional):	
Finish		

< Back Next > Cancel

7. On the next Screen please tick the checkbox 'Open the Properties dialog for this task when I click finish' and confirm the screen by clicking 'Finish'
8. A new windows will open where you can select which User should execute the Server Agent. Please make sure to select 'Run whether user is logged on or not'. Otherwise the Server Agent will not be run in the background.



Proxy Configuration for Server Agent

To enable use of a proxy for upload to the Nimbussec API, set the environmental variable "http_proxy" using following syntax: `http_proxy=http://[user:pwd@]proxy-ip:port/` For the Windows Command Prompt an example would be: `'set http_proxy=http://username:pwd@meinproxy:8080'`

Revision #1

Created 26 July 2021 08:27:43 by Patrick Wall

Updated 26 July 2021 08:42:22 by Patrick Wall